



**TECHNICAL DATA**

Temperature Range	-18° to -22°C
Dimensions	650 x 600 x 855
Refrigerated Volume	120 L
Refrigeration System	Air Cooled   Forced Ventilated System
Refrigerant	R134a (R290 Optional)
Insulation (50mm)	CFC free Cyclopentane
Defrost	Electric   Hot gas
Voltage	220-240V   50-60Hz

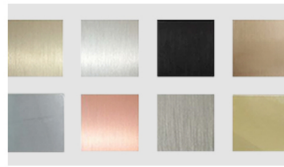
**FEATURES**

- Digital controller (IP55)
- 120° openable stainless steel door, right hinged
- One wire shelf per door
- Hygiene internal corners
- Interior & Exterior (front, top, & 2 sides) in AISI 304 S/S
- Locking Kit

**OPTIONS**



Set of half drawers

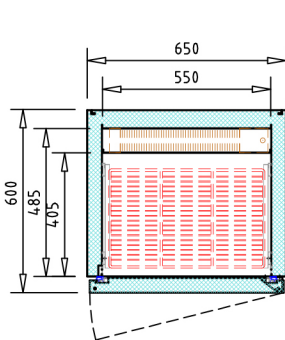


Special finish | Grade 316

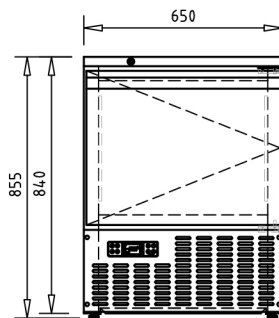


Left hinged door

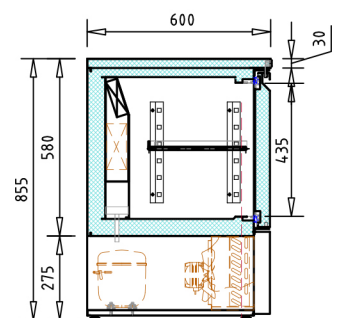
**TECHNICAL DRAWINGS**



Top view



Front view



Section view