

**TECHNICAL DATA**

Temperature Range	+2° to +4°C
Dimensions	914 x 800 x 640
Refrigerated Volume	160 L
Refrigeration System	Air Cooled   Forced Ventilated System
Refrigerant	R134a (R290 Optional)
Insulation (50mm)	CFC free Cyclopentane
Defrost	Electric   Hot gas
Voltage	220-240V   50-60Hz

**FEATURES**

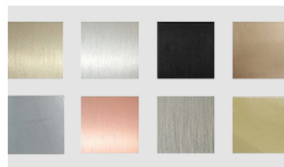
- Digital controller (IP55)
- Single stainless-steel drawer
- Hygiene internal corners
- Interior & Exterior (front, top, & 2 sides) in AISI 304 S/S
- Castors



**OPTIONS**



- Legs
- Water cooled | Remote compressor

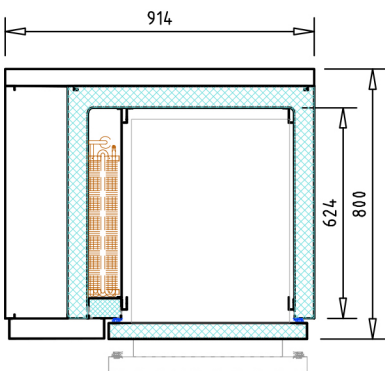


- Special finish | Grade 316

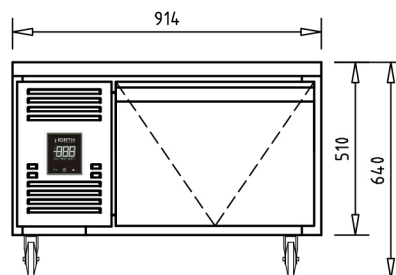


- Stainless-steel door

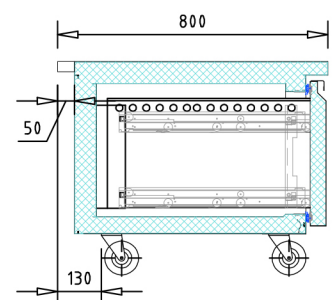
**TECHNICAL DRAWINGS**



Top view



Front view



Section view

