



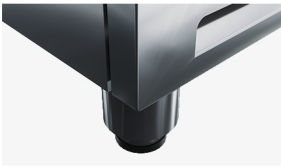
TECHNICAL DATA

Temperature Range	+2° to +4°C
Dimensions	1500 x 800 x 880/1040
Refrigerated Volume	320 L
Refrigeration System	Air Cooled Forced Ventilated System
Refrigerant	R404a (R290 Optional)
Insulation (50mm)	CFC free Cyclopentane
Defrost	Electric Hot gas
Voltage	220-240V 50-60Hz

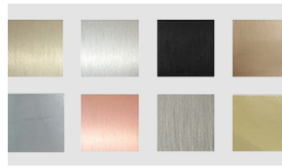
FEATURES

- Digital controller (IP55)
- Two 120° openable stainless steel doors
- One wire shelf per door
- Open structure accommodates 7 GN 1/3 Pans
- Hygiene internal corners
- Interior & Exterior (front, top, & 2 sides) in AISI 304 S/S

OPTIONS



- Legs
- Water cooled | Remote compressor

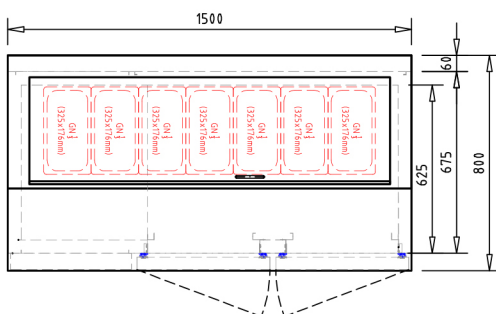


- Special finish | Grade 316
- Acrylic cover

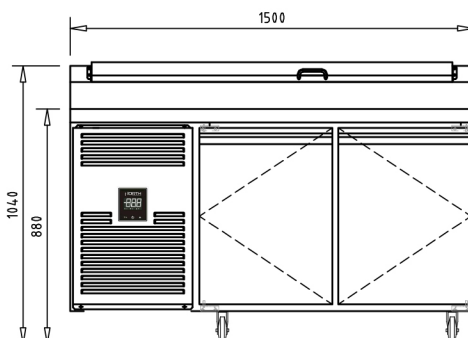


- Half | Triple drawers

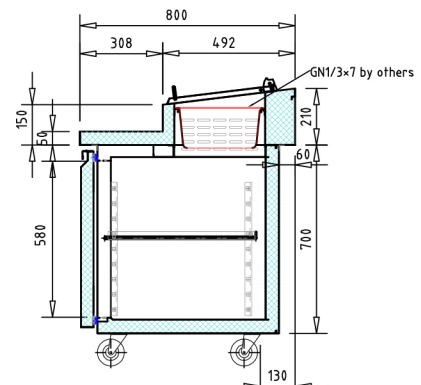
TECHNICAL DRAWINGS



Top view



Front view



Section view