



TECHNICAL DATA

| | |
|----------------------|---------------------------------------|
| Temperature Range | 0° to +4°C |
| Dimensions | 1350 x 700 x 850 |
| Refrigerated Volume | 260 L |
| Refrigeration System | Air Cooled Forced Ventilated System |
| Refrigerant | R134a (R290 Optional) |
| Insulation (50mm) | CFC free Cyclopentane |
| Defrost | Electric Hot gas |
| Voltage | 220-240V 50-60Hz |

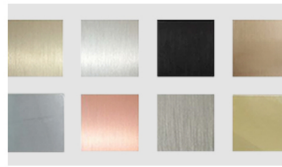
FEATURES

- Digital controller (IP55)
- Two 120° openable stainless steel doors
- One wire shelf per door
- Hygiene internal corners
- Interior & Exterior (front, top, & 2 sides) in AISI 304 S/S
- Legs

OPTIONS



- Locking kit
- Glass door



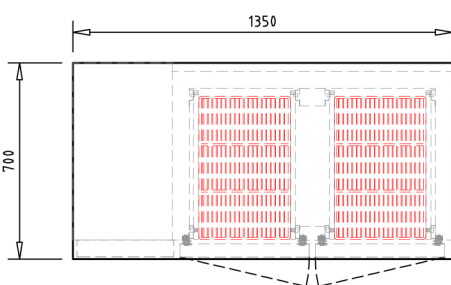
- Special finish | Grade 316
- Water cooled | Remote compressor



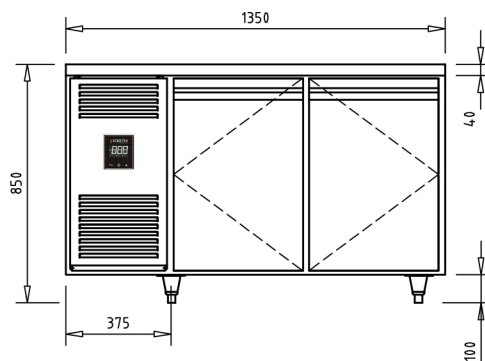
- Castors
- Worktop with backsplash



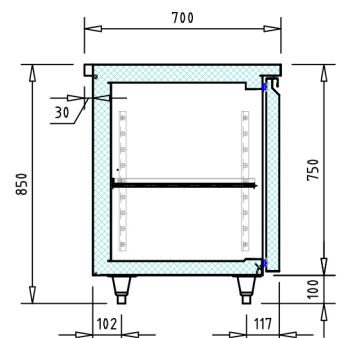
TECHNICAL DRAWINGS



Top view



Front view



Section view