



TECHNICAL DATA

Temperature Range	+2° to +4°C
Dimensions	600 x 715 x 1970
Refrigerated Volume	525 L
Refrigeration System	Air Cooled Forced Ventilated System
Refrigerant	R134a (R290 Optional)
Insulation (50mm)	CFC free Cyclopentane
Defrost	Electric Hot gas
Voltage	220-240V 50-60Hz

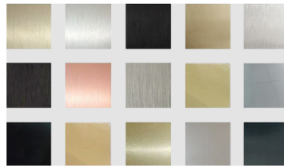
FEATURES

- Digital Waterproof IP55 controller
- 120° openable stainless-steel door, right hinged
- Hygiene internal corners
- Interior & Exterior (front & sides) in AISI 304 SS
- Locking Kit and Castors

OPTIONS



- Adjustable legs
- Water cooled | Remote compressor

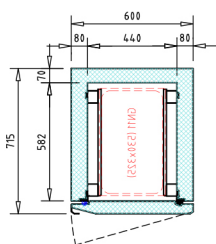


- Special finish | Grade 316

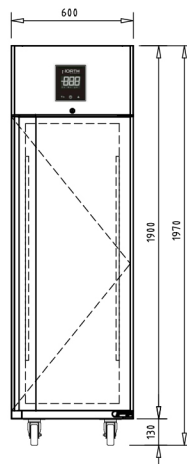


- Fish containers

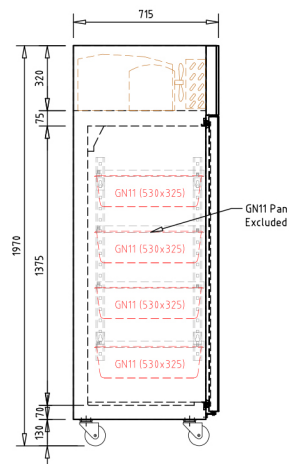
TECHNICAL DRAWINGS



Top view



Front view



Section view