



**TECHNICAL DATA**

Temperature Range	-22° to -18°C
Dimensions	1440 x 810 x 2050
Refrigerated Volume	1300 L
Refrigeration System	Air Cooled   Forced Ventilated System
Refrigerant	R404a (R290 Optional)
Insulation (50mm)	CFC free Cyclopentane
Defrost	Electric   Hot gas
Voltage	220-240V   50-60Hz

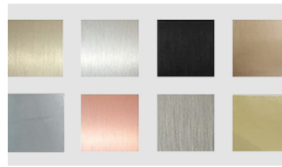
**FEATURES**

- Digital controller (IP55)
- Two 120° openable glass doors
- Four wire shelves per door
- Hygiene internal corners
- Interior & Exterior (front, top, & 2 sides) in AISI 304 S/S
- Locking Kit and Castors

**OPTIONS**



- Adjustable legs
- Water cooled | Remote compressor



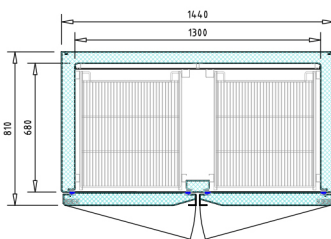
- Special finish | Grade 316



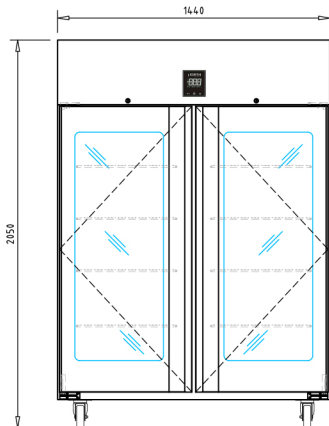
- Custom light



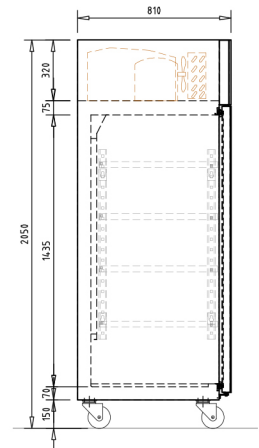
**TECHNICAL DRAWINGS**



Top view



Front view



Section view