



TECHNICAL DATA

Temperature Range	-18° to -22°C
Dimensions	600 x 715 x 1970
Refrigerated Volume	525 L
Refrigeration System	Air Cooled Forced Ventilated System
Refrigerant	R404a (R290 Optional)
Insulation (50mm)	CFC free Cyclopentane
Defrost	Electric Hot gas
Voltage	220-240V 50-60Hz

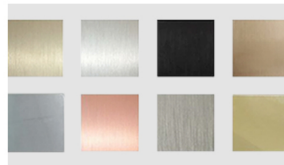
FEATURES

- Digital controller (IP55)
- 120° openable glass door, right hinged
- Four wire shelves per door
- Hygiene internal corners
- Interior & Exterior (front, top, & 2 sides) in AISI 304 S/S
- Locking Kit and Castors

OPTIONS



- Adjustable legs
- Water cooled | Remote compressor

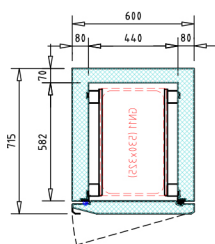


- Special finish | Grade 316

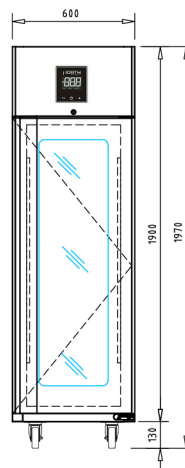


- Custom light

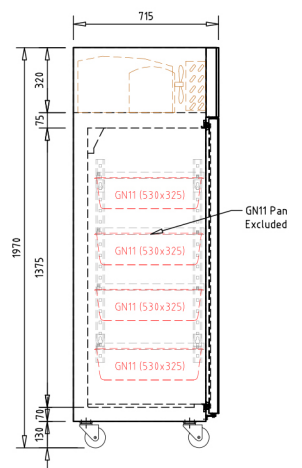
TECHNICAL DRAWINGS



Top view



Front view



Section view